

## Do you see the Change?

Winter Spring Summer Fall

### What is change mean to the seasons?

- ▶ **Change:** Means to transform or convert, means to become altered or modified.
- ▶ The seasons change in multiple ways!
- ▶ Can you name any changes that you think take place in the transition from season to season?

## THE 12 MONTHS

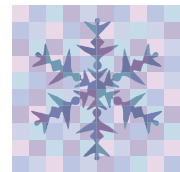


## Months of Winter

**December**

**January**

**February**



## WINTER

▶ **Winter comes after fall and before Spring**

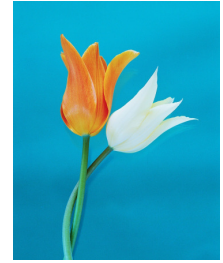


- \* **The trees lose all the leaves**
- \* **We start to dress warmer**
- \* **It gets colder out**
- \* **It gets darker earlier**
- \* **Snow Falls !!**
- \* **Some animals go into hibernation.**



## Months of Spring

**March**  
**April**  
**May**



## Spring

\* **Spring Comes after Winter and before the Summer**

\* **Rain helps to melt the snow**

\* **Snow begins to melt**

\* **Lighter cloths are worn more**

\* **We start to see green grass and flowers blooming**

\* **Outdoor sports and activities are beginning to be played more**



## Months of Summer



**June**  
**July**  
**August**



## Summer

**\*Summer Comes after Spring and Before Fall**

**\*Weather gets warmer and warmer**

**\*Pools are open**

**\*Summer cloths are worn**

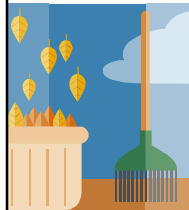
**\*School is almost over**

**\*Animals come out of hibernation**

**\*Baby animals are born**



## Months of Fall



**September**  
**October**  
**November**



## Fall

**\*Fall comes after the Summer and before Winter**

**\* Leaves start to change colors**

**\*Leaves fall of the trees**

**\*it begins to get cooler out**



Now lets discuss with  
Each other  
what we just learned  
About!!

